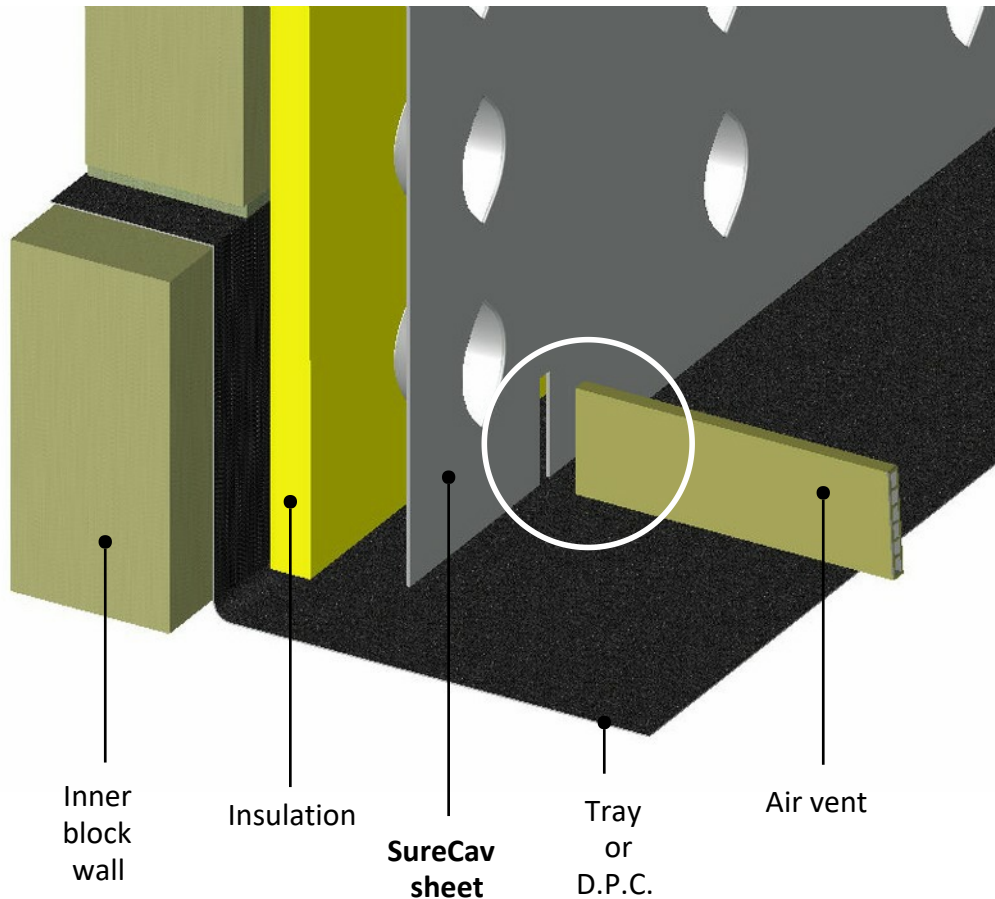
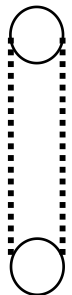


## Installing an Air Vent In Traditional Construction (If required by local authority)



Cut a slot in the SureCav sheet 10mm wide and 65mm high to match the profile of the ventilator (as shown inside the white circle above). If the intended slot does not coincide with the edge of the SureCav sheet then simply drill a 10mm dia. hole at the top and bottom and cut the material away as shown on the right.




### Compliance

#### The Building (Scotland) Regulations 2004

Vent wall cavities with a masonry outer leaf by installing ventilators with at least 300mm<sup>2</sup> free opening area at 1.2m maximum centres (If required).

#### NHBC Standards

The cavity should be ventilated as detailed above if required by local authority.

**SureCav**<sup>®</sup> recommends **Cavity Trays**  for all your waterproofing and ventilation requirements.

Cavity Trays Ltd., Yeovil, Somerset BA22 8HU [www.cavitytrays.com](http://www.cavitytrays.com)